

Spohr Terrace

South Shields NE33 3LT

This well-presented ground floor apartment offers modern living in a secure development, with the added benefit of no upper chain. Neutrally decorated throughout, the home features a welcoming hallway with excellent storage, a stylish lounge with feature fireplace and glass brick detail, a well-equipped kitchen with integrated appliances, and a contemporary bathroom suite. The property is further complemented by communal garden areas, allocated parking, and a handy bin store. Ideally located close to the coast and town centre, with excellent local amenities and transport links nearby, this apartment is perfect for first-time buyers, downsizers, or those seeking a convenient coastal base.

Offers in the region of £65,000

The Bridges Spohr Terrace

South Shields NE33 3LT



- GROUND FLOOR APARTMENT
- NO UPPER CHAIN
- NEUTRALLY DECORATED
- SPACIOUS
- CLOSE TO THE COAST
- IDEAL FOR THE TOWN CENTRE
- GREAT FIRST TIME BUY OR LANDLORD INVESTMENT
- ALLOCATED PARKING

Communal Entrance hallway

Hallway

Lounge

15'5" x 10'0" (4.71 x 3.07)

Kitchen

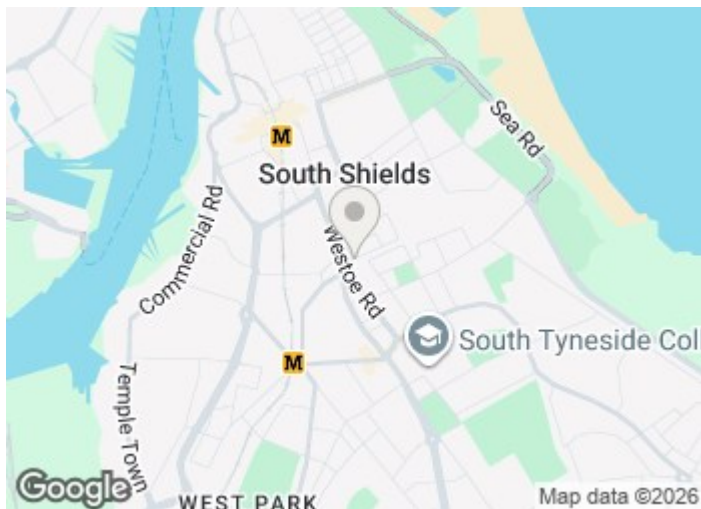
8'4" x 7'7" (2.55 x 2.33)

Bedroom

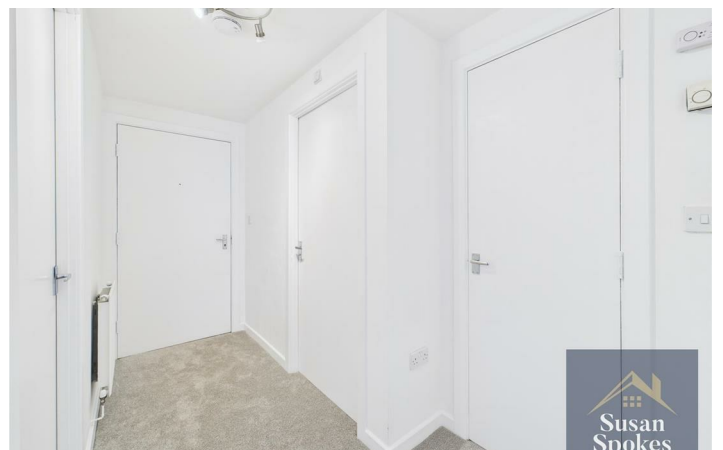
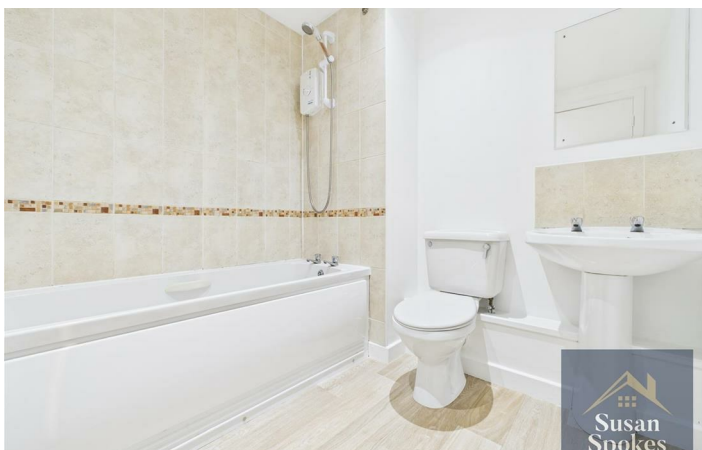
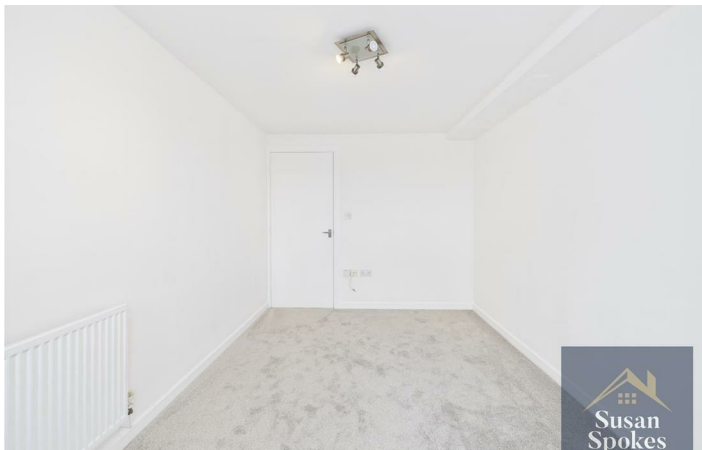
12'9" x 8'9" (3.9 x 2.68)

Bathroom

External



Directions





Floor Plan

These particulars, whilst believed to be accurate are set out as a general outline only for guidance and do not constitute any part of an offer or contract. Intending purchasers should not rely on them as statements of representation of fact, but must satisfy themselves by inspection or otherwise as to their accuracy. No person in this firms employment has the authority to make or give any representation or warranty in respect of the property.

